

WATTLE

WATTLE

WATTLE is the first major survey exhibition of contemporary Australian art in Hong Kong. The exhibition will showcase the extraordinary depth and range of the Australian art scene, aiming to bring it closer to the level of international recognition it deserves. WATTLE features a curator's pick of forty-five artists working in Australia and includes painting, sculpture, photography and mixed media installation. The artists selected for WATTLE vary greatly in their practice, conceptual stance and range from freshly emerging, to young leaders in the field, to established artists, and finally, to veritable living masters.

In order to allow the artists to best represent their work, no curatorial theme has been imposed and each artist will exhibit one key artwork. Highlights include John Olsen, the Godfather of Australian landscape painting; Janet Laurence, one of the most revered artists of her generation; recent Archibald Prize winners Sam Leach, Guy Maestri, Del Kathryn Barton and Adam Cullen; a host of young hot talent such as Paul Davies, Tim Summerton, Juan Ford, Alan Jones, Alexander Seton, Jasper Knight, Tony Lloyd and Giles Alexander; plus the established and much admired painters Martine Emdur, Joshua Yeldham, Lara Merrett, Andrew Taylor, and Clinton Nain.

Full list of exhibiting artists in alphabetical order: Giles Alexander, Ben Ali-Ong, Richard Allen, Del Kathryn Barton, Annette Bezor, Adam Cullen, Paul Davies, Julia deVille, Doble and Strong, Stefan Dunlop, Martine Emdur, Juan Ford, Belinda Fox, James Gordon, Gina Haywood, Ralph Heimans, Hanna Hoyne, Todd Hunter, Leila Jeffreys, Alan Jones, Aaron Kinnane, Jasper Knight, Jennifer Keeler-Milne, Janet Laurence, Sam Leach, Tony Lloyd, Joanna Logue, Camie Lyons, Guy Maestri, James McGrath, Julian Meagher, Linton Meagher, Lara Merrett, Clinton Nain, John Olsen, Kirsteen Pieterse, Marisa Purcell, Reko Rennie, Alexander Seton, Tim Silver, Tim Summerton, Andrew Taylor, Oliver Watts, Joshua Yeldham.



GILES ALEXANDER
Sensation

Oil and resin on pollyster canvas
105 x 65 cm
2010



BEN ALI ONG

(above) Ballads of the Dead and Dreaming 1

(below) Ballads of the Dead and Dreaming 4

C Print
90 x 135 cm
2010



RICHARD ALLEN
Watercourset

Acrylic on canvas
240 x 150 cm
2008



DEL KATHRYN BARTON
child

watercolour, gouache, acrylic and pen on polyester canvas
63.5 x 85.5 cm
2011



ANNETTE BEZOR
A Violent Silence

Acrylic and oil on canvas
65 x 165 cm
2010



ADAM CULLEN
Copper

Acrylic on canvas
90 x 90 cm
2010



PAUL DAVIES
House on Hill

Acrylic on linen
153 x 122 cm
2010



JULIA DEVILLE
Orcus

Stillborn piglet, diamonds, freshwater pearls, sterling silver, wood, glass
32 x 30 x 36 cm
2010



DOBLE & STRONG
Dur Mater

Gloss enamel on chromogenic print mounted on aluminium composite board
178 x 125 cm
2009



STEFAN DUNLOP
Milmerran

Oil on linen
152 x 132 cm
2010



MARTINE EMDUR
Linger 2

Oil on linen
153 x 228 cm
2011



JUAN FORD
Bushwhaker

Oil on linen
76 x 61 cm
2010



BELINDA FOX
Remain

Drawing and painting on paper
200 x 140 cm
2010



JAMES GORDON
Found, not Plucked #1

Gouache & watercolor
52 x 52 cm
2011



GINA HAYWOOD

(left) Panthus IV

(right) Panthus V

Charcoal and chalk on stonehenge paper

76 x 57 cm

2010



RALPH HEIMANS
The Boyers

Oil on canvas
190 x 250 cm
Private collection, Hong Kong

Available for commission



HANNA HOYNE
Emotion Ocean Protection Suit

Korean and standard commercial papers, Chinese joss paper, synthetic fabrics, glue, cane, stitching
Dimensions variable
2004



TODD HUNTER
(left) Distant Shore
(right) Set Out To Sea Love

Oil on canvas
160 x 140 cm
2011



1



2



3



4



5



6



7



8



9

LEILA JEFFREYS

**1 - Mrs Plume 2 - Lenny 3 - Butter Ball 4 - Spencer 5- Vincent
6 - Cliff 7 - Terry 8 - Little Holly Squawkamole 9 - Suzi**

**** 5-Vincent and 9 - Suzi will be displayed in exhibition**

Colour photographs
Edition 4/10
99 x 76 cm each



ALAN JONES
The Crown Jewels

Metal, fabric, synthetic fur, plastic and dimonties
58 x 62 x 62 cm
2010



JENNIFER KEELER-MILNE
Wattle's Light

Oil on canvas
61 x 61 cm
2010



AARON KINNANE

When Extraordinary Things Happen to Ordinary People

Oil on canvas
160 x 150 cm
2010



JASPER KNIGHT
Overpass at Blackwattle Bay

Enamel on perspex, peg board and found signs on board
150 x 150 cm
2010



JANET LAURENCE
Glance in Glass II

Duraclear on shinkolite acrylic, mirror, oil glaze
100 x 140 cm
2009 - 2011



SAM LEACH
Fons et Origo

Oil on resin on wood and brass
33 x 35 cm
2010



TONY LLOYD
Bulukadaru

Oil on linen
120 x 216 cm
2010



JOANNA LOGUE
Apple Tree - Essington

Oil on linen
138 x 92 cm
2010



CAMIE LYONS
Wings in the Big Blue

Flocked bronze
62 x 60 x 46 cm
2010



GUY MAESTRI
Robertson

Oil and enamel on linen
152 x 183 cm
2011



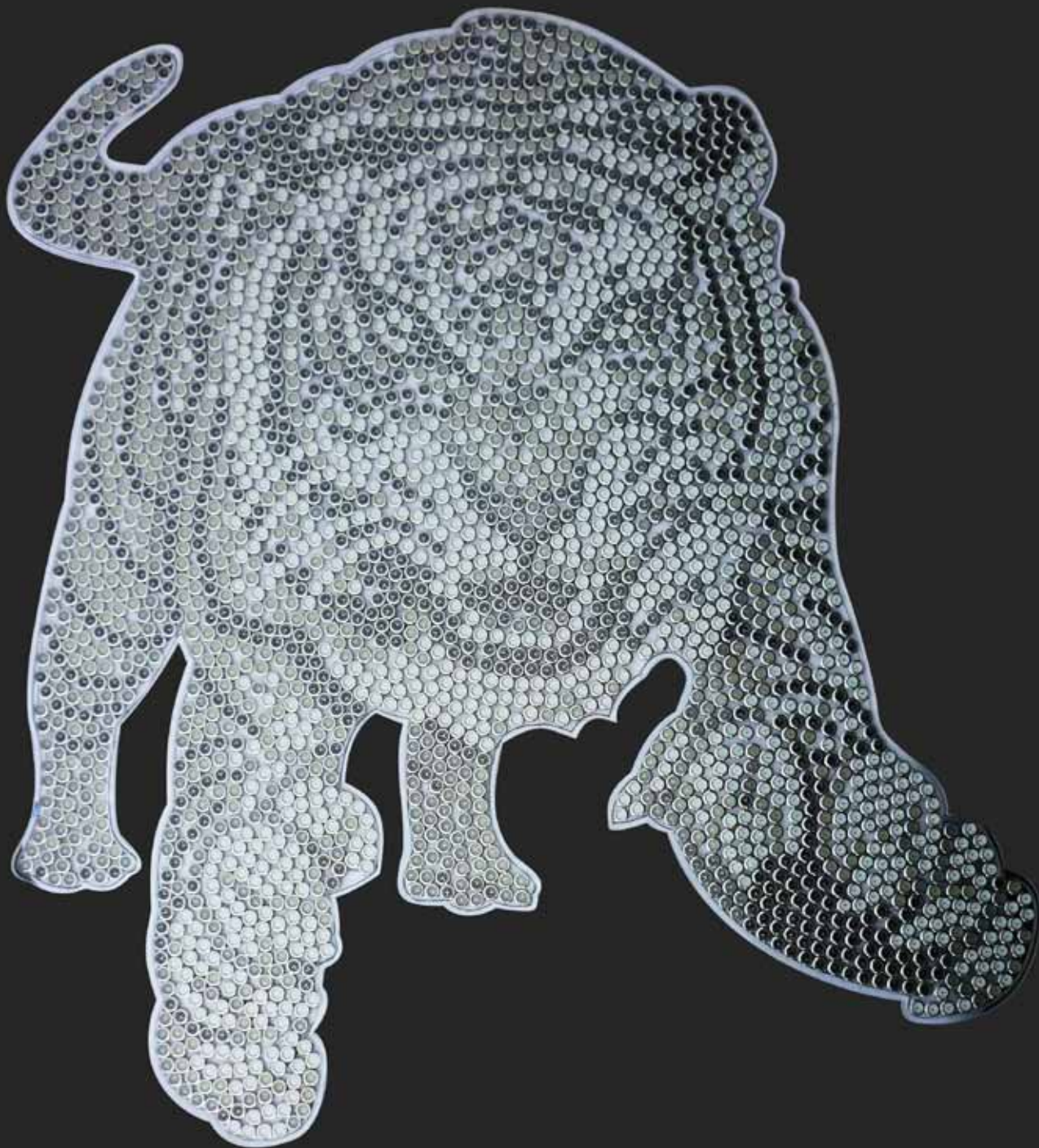
JAMES MCGRATH
Baroque Interior

Oil on linen
158 x 219 cm
2009



JULIAN MEAGHER
As a Matter of Fact I Got It Now III

Oil on linen
120 x 180 cm
2011



LINTON MEAGHER
Tiger

Watches in resin on perspex
165 x 120 cm
2011



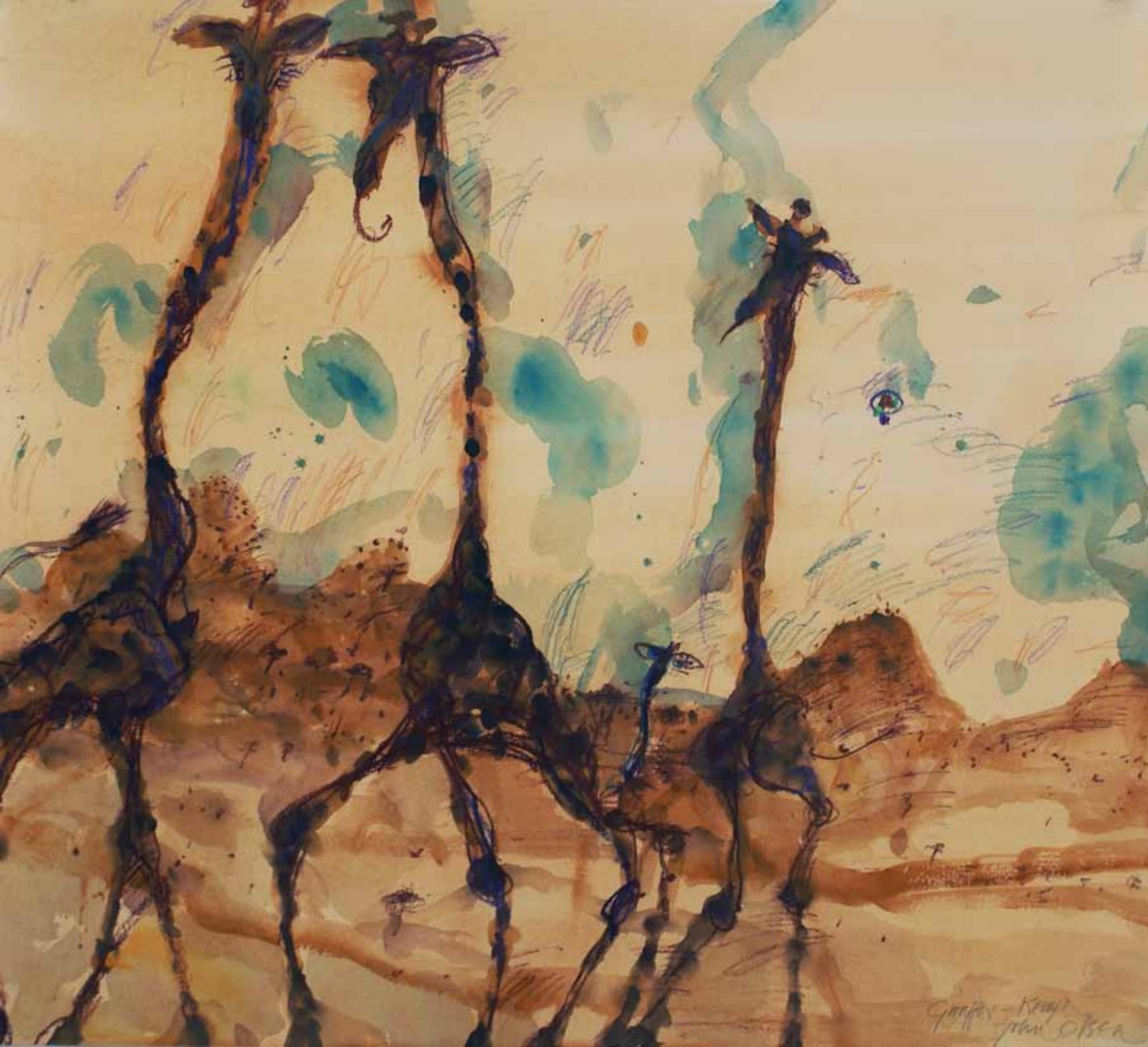
LARA MERRETT
Side by Side

Synthetic polymer paint & ink on linen
230 x 185 cm
2010



CLINTON NAIN
Hit the Target

Acrylic and bitumen on linen
50.8 x 35.5 cm
2011



JOHN OLSEN
Giraffes - Kenya

Mixed media on paper
75 x 86 cm
2010



KIRSTEEN PIETERSE
Cloudcatcher

Mirror stainless steel & clear acrylic rod
73 x 57 x 23 cm
2010



MARISA PURCELL
Ebbing Space

Oil on canvas
122 x 138 cm
2010



1



2



3



4

REKO RENNIE

- 1 - Aborigine (Orange)
- 2 - Aborigine (Red)
- 3 - Aborigine (Green)
- 4 - Aborigine (Blue)

Acrylic and spraypaint on linen
83.8 x 106.7 cm
2011



ALEXANDER SETON
Paradise Lost

Bianca marble, rubber stoppers
15 x 36 x 68 cm
2011



TIM SILVER

(from left) Untitled (Rory) s1, s2, s3, s4, s5
Edition 2/3

Pigment print on etching rag
Photograph by Jamie North
(image size) 38.5 x 38.5 cm (paper size) 45.5 x 45.5 cm
2010



TIM SUMMERTON
Tangled Bloom

Oil on linen
183 x 152 cm
2010



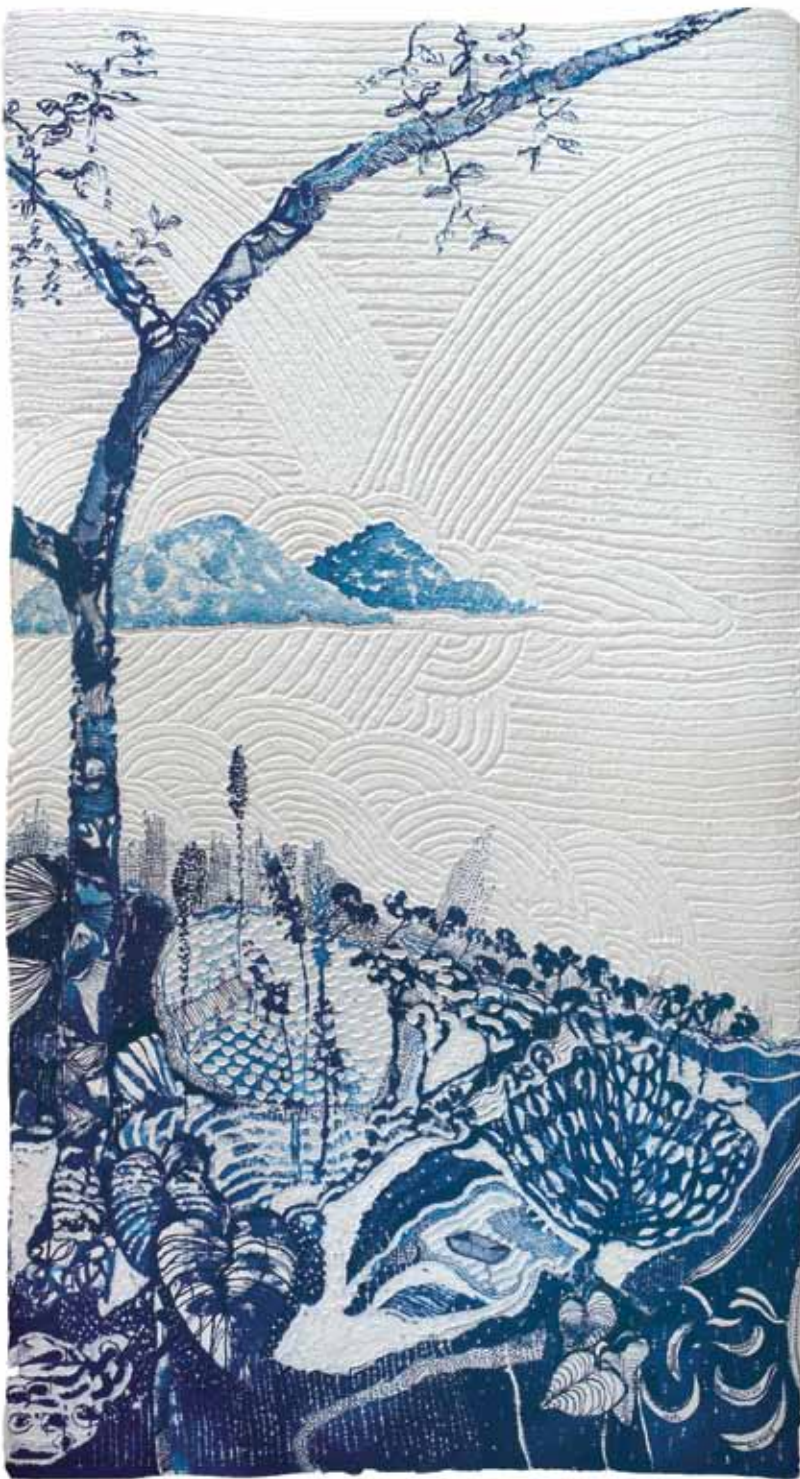
ANDREW TAYLOR
Outside: Arkaba Station

Oil on linen
152.4 x 152.4 cm
2010



OLIVER WATTS
Crown Land

Acrylic on canvas
102 x 122 cm
2010



JOSHUA YELDHAM
Fertility Owl - Castle Bay (dyptych)

Blue Shellac on hand made carved paper
200 x 200 cm
2011



The Cat Street Gallery

222 Hollywood Road, Sheung Wan, Hong Kong

T: +852 2291 0006

F: +852 2544 6110

E: info@thecatstreetgallery.com

W: www.thecatstreetgallery.com