

The Working Proof

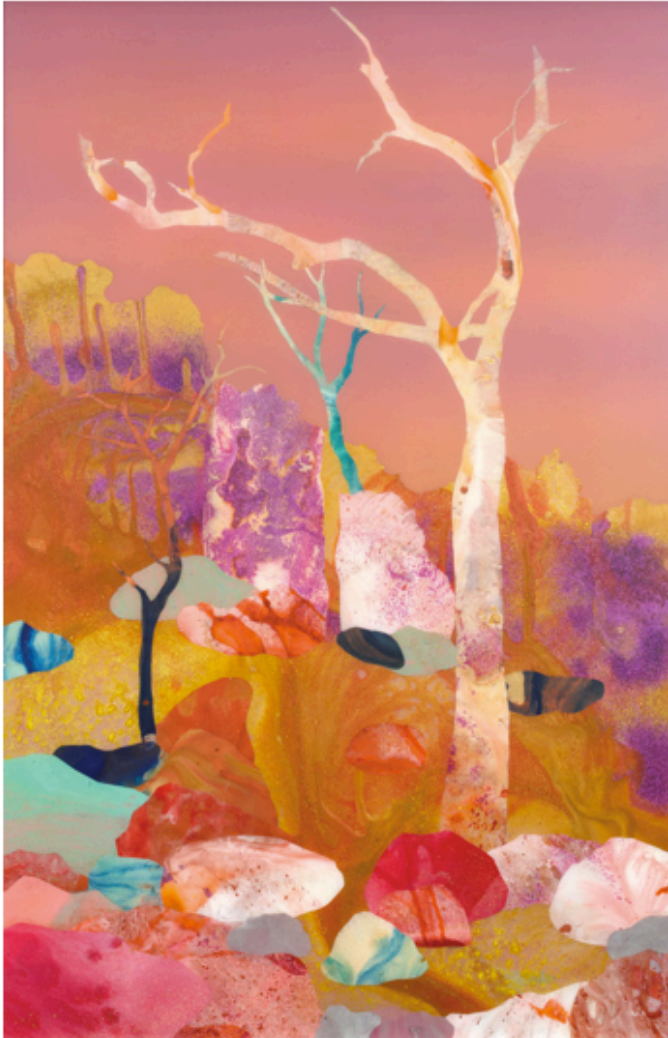
CREATIVITY. CHARITY. COMMUNITY

GET THE NEWSLETTER
ABOUT BROWSE ARTISTS CHARITIES BLOG

Showing posts with label **kate shaw**. Show all posts

KATE SHAW: ALL THAT GLITTERS

RELEASED TUESDAY, MARCH 29, 2011



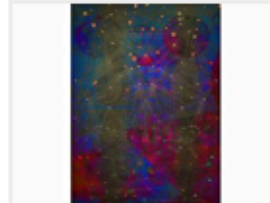
All that Glitters, by Kate Shaw.

15% of the sale of this print goes to American Forests.

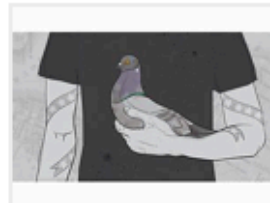
RECENT RELEASES



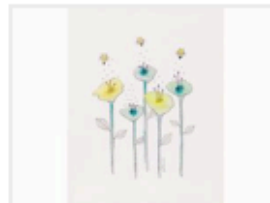
Our Love Transcends Most Things, by Megan Kott
Paired with Farm Sanctuary



A1ACa, by Dr. Tripti Singh
Paired with Kids In Need Foundation



Excelsior (re-release), by Sean Auyeung
Paired with Bowery Mission



The Flowers & The Bees, by Amaranta Martinez
Paired with Kids In Need Foundation

Vacillating between the real and the hallucinated, [Kate Shaw's](#) works harmonize textures, dimensions, and colors with the fluidity of a psychedelic body of moving water. Through these vibrantly saturated pieces, she creates an intermediary space between what we know to be natural and organic, and what we perceive of as otherworldly, ultimately constructing a narrative of how nature and art are both irrevocably transformative.

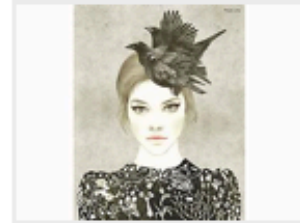
Kate Shaw was born in Sydney, Australia. She received her BFA in 1994 from RMIT University in Melbourne, and a Diploma of Museum Studies in 1997 from Deakin University, also in Melbourne. She has been included in group exhibitions in Australia, Japan, China, France, England, and the US, and solo exhibitions in Australia and New York. She has been the recipient of multiple awards, and a finalist for the John Leslie Art Prize, Felurieu Art Prize, and the ABN AMRO Emerging Artist Award. She participated in the 24hrART studio residency in Darwin in 2008, and is currently participating in a residency at Flux factory that is realized in collaboration with Residency Unlimited. In addition to consistently augmenting her own body of work, Shaw dabbles in the curatorial sphere as well. Shaw is represented by the Sullivan + Strumpf Fine Art, Ryan Renshaw Gallery, and Nellie Castan Gallery in Australia. She works and lives in Brooklyn, NY, and Melbourne, Australia.



[Adding Scars to my Heart](#), by [Amy Friend](#)
Paired with [Puppies Behind Bars](#)



[The weight of carrying the memory of her dead relatives was becoming more than she could bear.](#), by [Eliza Campbell Kiser](#)
Paired with [Doctors Without Borders](#)



[Crow Hat](#), by [Madame Lolina](#)
Paired with [Kids In Need Foundation](#)

BLOG ARCHIVE

▶ [2013 \(33\)](#)

▶ [2012 \(14\)](#)

About the print:

This work was created after a residency at 24hr Artspace in Darwin, Australia. The landscape in the Northern Territory ranges from tropical to rocky desert. One of the features of this landscape is the Ghost Gum, a type of eucalyptus tree, which has a white bark that changes colour depending on the light conditions. At dusk the tree trunks range from a bright orange to a pale skin colour, depending on the intensity of the sun. [All that Glitters](#) depicts a Ghost Gum and considers the ephemeral nature of things.

This is a digital print on acid free, Neenah uncoated matte 100lb cover paper that is 80% recycled. It was digitally signed by the artist and was numbered by The Working Proof.

PURCHASE \$30!



What has inspired you recently?

I recently went on a road trip through the southwestern US, through some incredible country. This inspired a recent exhibition, [Irrational Geographic](#). I love that when you are looking at canyons and layers of sedimentary rock, you are looking at millions of years - essentially, time captured.

- ▶ 2012 (49)
- ▼ 2011 (50)
 - ▶ Decem
 - ▶ Novem
 - ▶ Octobe
 - ▶ Septem
 - ▶ August
 - ▶ July (4)
 - ▶ June (4)
 - ▶ May (5)
 - ▶ April (4)
 - ▼ March (
 - Kate Shu
 - Jacqueli
 - It's sprin
 - Japan R
 - Birds i
 - Carolyn L
 - ▶ Februar
 - ▶ January
- ▶ 2010 (60)
- ▶ 2009 (13)



Why did you choose to pair American Forests with your print?

I chose [American Forests](#) as my charity because of their work in conserving and replanting forests. I have taken some amazing road trips through the southwest of the US, and the landscape is just incredible. In addition to the beauty and the psychological importance of forests, trees are the air that we breathe, as long as we are in the world.



How have you seen art transform the world around you?

That's a big question! Basically, we wouldn't have the world we have without art - it's essential. Even when it has been repressed, art emerges somehow. It is part of human nature.

If you could pick one artist to mentor you, who would it be?

I love [Julie Mehretu's](#) work - it is always amazing and inspiring.

Who are some artists you think people should know about?

I think there are a ton of Australian artists that the world should know about! Maybe I am biased, but some of my favourite artists right now are [Mira Gojak](#), [Sandra Sellig](#), [Laith McGregor](#), [Chris Bond](#), [Richard Bell](#), [Darren Wardle](#), [Laresa Kosloff](#), [Amanda Morgan](#), and [Natasha Johns-Messenger](#).



POSTED BY ANNA AT 1:30 PM 0 COMMENTS
LABELS: AMERICAN FORESTS, DIGITAL, KATE SHAW